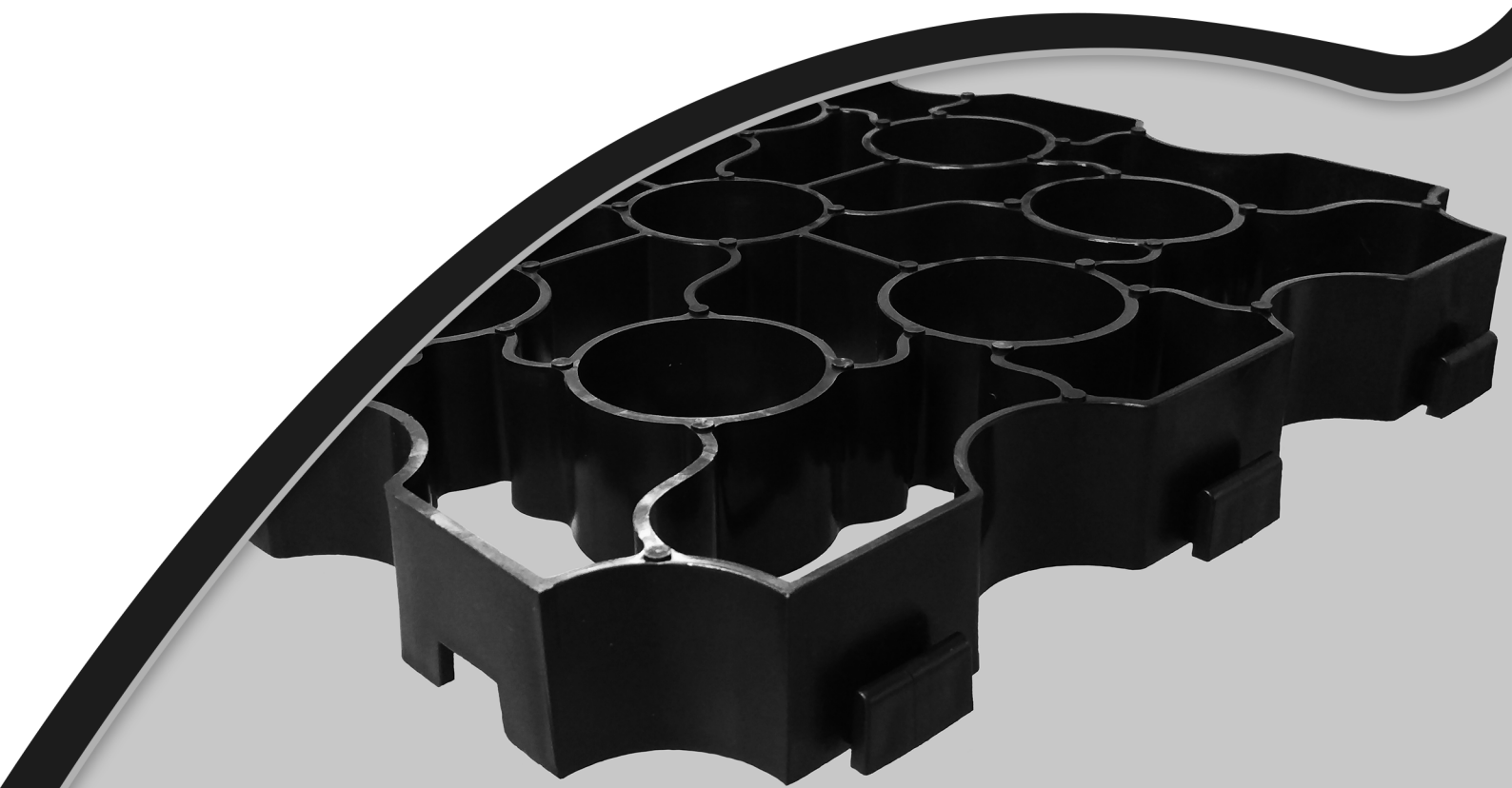


X-Grid[®]

GROUND REINFORCEMENT GRID

PRODUCT GUIDE

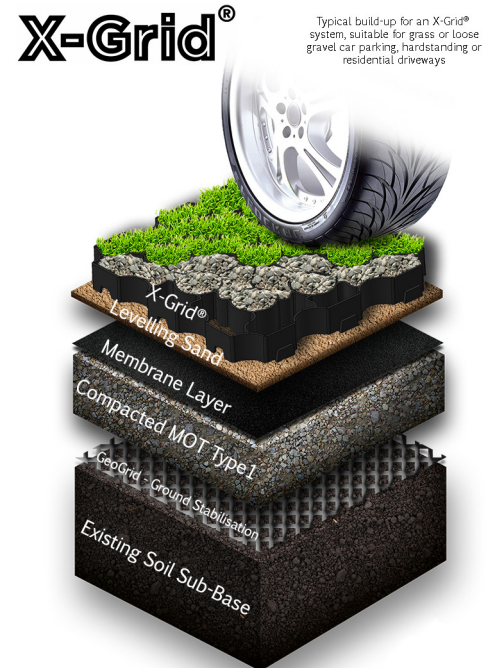


X-Grid® is a versatile, SuDS compliant ground reinforcement and gravel retention grid which is suitable for use in a huge number of different applications.

It is manufactured in the UK from **100% recycled** plastic and offers an **eco-friendly**, highly permeable alternative to tarmac or concrete surfaces, most commonly used in both domestic and commercial car parking.

Tested by experts at Lloyds British Testing, X-Grid® has a proven compressive strength of up to **428 tonnes per m²**, making it one of the strongest products on the market and complies with the requirement of DIN 1072. For a product only weighing just over **5kg** per square metre, that's pretty impressive stuff.

The easy-to-handle nature of X-Grid® means that a single person can lay up to **100m² per hour!** With its 330mm x 330mm x 40mm dimension, connecting nine panels together forms a nominal square metre. Due to the modular nature of the grid, many different shapes can be created specifically for your project with minimal product wastage.

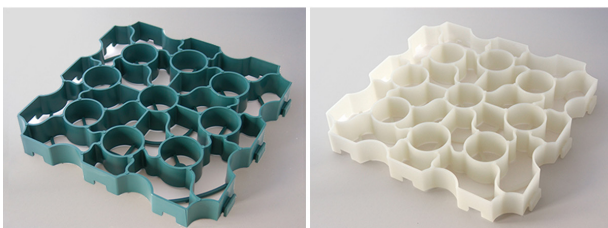


Available in **three colours**; black, white and natural, there's an X-Grid® to suit any surrounding and any kind of fill, whether it be gravel, grass, bark or rubber crumb.

The **unique** cell design means that gravel is retained much more effectively and prevents the fill from migrating to surrounding areas, causing unnecessary maintenance such as raking or sweeping.

The **permeable** nature of the grid allows water to pass through the structure into the sub-base below and helps to reduce surface water run-off. This helps to mitigate the effects of severe and/or sudden rainfall by locking groundwater into the sub-base for it to gradually soak away, diverting water from the sewer system.

As X-Grid® is so efficient, it can help to reduce project costs in a number of different ways: reducing labour time through fast installation, reduced dig and fill requirement saves on material costs and utilising X-Grid® on a project can eliminate ongoing maintenance costs, making the surface much more economical over time.





9 DIFFERENT WAYS YOU MIGHT USE X-GRID® GROUND REINFORCEMENT GRID



Equestrian

X-Grid has a number of applications in an equestrian setting including in stalls, paddocks, indoor and outdoor riding arenas, automatic walkers and courtyards. X-Grid reduces muddy areas and provides reliable drainage.



Car Parking

X-Grid can be used as a solid and stable gravel retention system for car parking. The grid can either be filled with soil and seed mix to provide a grassed surface or with decorative gravel.



Fire Access Routes

X-Grid provides a stable permeable access route for emergency services, while providing an eco-friendly, porous, free draining access route that could be gravel or grassed to cause as little impact to the surroundings as possible.



Hot Tubs

The plastic hot tub base can be filled with decorative gravel or a soil/seed mix for a grass effect, so that it is in keeping with the surrounding area. The plastic property of the X-Grid means that it will never rot or need re-sealing unlike traditional wooden decking, which requires perennial maintenance.



Agricultural & Farming

Using X-Grid in an agricultural context can help to reduce the amount of localised mud and puddling, while providing a base which is strong enough to cope with large numbers of cattle and agricultural vehicles.



Campsites

Campsites can face serious issues with churn and rutting of their grassed camping pitches during winter months. X-Grid can help to make grassed hardstanding pitches suitable for caravans, tents and even mobile homes.



Golf Courses

X-Grid has been utilised on a number of courses across the UK for such applications as cart paths and pedestrian walkways where moisture is an issue. Using X-Grid on-course also reduces the need for annual seeding of high trafficked areas, leaving more time to focus on other areas of the course.



Home & Garden

In domestic settings, X-Grid has a number of uses including domestic grass and gravel driveways, improving drainage for soggy lawns, adding stability to rockeries and borders as well as making perfect a base for hot tubs, sheds and summerhouses.



Rainwater Harvesting



X-Grid can offer a fully permeable paving solution that when combined with underground storage tanks, can harvest rainfall for re-use in a variety of domestic and commercial applications. This reduces both flood risk and mains water usage.

Product Features



Quick & Easy Installation



Lightweight & Easy To Handle



High Compressive Strength



Tight Slot & Peg Connection



Reduces Surface Water Run-off



Minimal ongoing maintenance



Can Be Used As Non-Slip Surface



Weatherproof, Rotproof, UV Stable



Can Be Cut To Size



Prevents Gravel Migration



Can Last Up To 25 Years



Manufactured from Recycled Plastic