

MANUAL FORCED ACTION MIXERS

CE
GB-13.06.17



MODEL 40L
Mixing capacity:
40 litres



MODEL 200L
Mixing capacity:
200 litres



MODEL 80L
Mixing capacity:
80 litres



MODEL 300L
Mixing capacity:
300 litres



MODEL 100L
Mixing capacity:
100 litres



MODEL 120L
Mixing capacity:
120 litres

THE RIGHT MODEL AND
SIZE DO MATTER.
FOR ANY JOB BIG OR SMALL
SOROTO OFFERS THE RIGHT
SIZE MODEL.

TABLE OF CONTENTS

SoRoTo 40L, 80L, 100L, 120L.....p.	3
Application.....p.	3
Before use.....p.	3
Before connecting the power supply.....p.	3
Operating the SoRoTo forced action mixer ...p.	3
Cleaning / maintenance.....p.	4
Transport.....p.	4
Safety.....p.	4
Technical data.....p.	6
Contact details.....p.	6
Special features/spare parts.....p.	7
Spare part list - 40 L.....p.	8
Spare part list - 80 L.....p.	10
Spare part list - 100 L.....p.	12
Spare part list - 120 L.....p.	14
SoRoTo 200L, 300L.....p.	16
Application.....p.	16
Before use.....p.	16
Before connecting the power supply.....p.	16
Operating the SoRoTo forced action mixer ...p.	16
Cleaning / maintenance.....p.	17
Transport.....p.	18
Safety.....p.	19
Technical data.....p.	19
Contact details.....p.	19
Spare part list - 200 L.....p.	20
Spare part list - 300 L.....p.	22
EC Declaration of Conformity.....p.	24

MANUAL APPLIES TO

SoRoTo 40L, 80L, 100L, 120L

APPLICATION

The SoRoTo Forced Action Mixers are ideal for mixing all kinds of materials used in the building industry, as well as for tasks where high demands are imposed on quality of the mix.

When mixing materials containing aggregates, we recommend using the SoRoTo Mixer arms set with rubber blades. (NOTE: The SoRoTo Forced Action Mixer 40L is not suited for mixing materials containing aggregates).

When using mixer arms equipped with steel blades to mix materials containing aggregates, the mixer arms may work their way upwards and eventually stop turning.

BEFORE USE

Before starting the mixer, the telescopic legs must be positioned for the right height for draining into a bucket or wheelbarrow. The easiest way for adjusting the legs is to lay down the mixer, so it rests on all four wheels. The legs are released and locked with the fitted lock splits/bolts.

BEFORE CONNECTING THE POWER SUPPLY

Before the power is connected, the mixer arms must be set in place, and the lid must be closed. The safety grid in front of the mixer gate must be attached at all times.

For own safety please always follow the instructions listed above before use.

OPERATING THE SOROTO FORCED ACTION MIXER

Close the lid and lock it into place using the rubber strap. Start the mixer by pressing the green START button on the protective motor switch. Pour the required material into the drum and add liquid.

The protective motor switch has a zero voltage releaser. In case of power failure, the mixer must be restarted. For safety reasons, the mixer will not start if the lid is open.

THE ORIGINAL AND SOME EXTRA



NOTE

Never put your hand or any object into the machine when the power is connected.

When the material has reached the desired consistency and the mixing motion is finished, the mixing drum is emptied by opening the mixer gate. The drum should be emptied right after mixing. Please observe that the material may set in the mixing drum, if left too long.



NOTE

The safety grid should be in front of the output gate at all times. If the machine is jammed, e.g. by larger stones, ensure that the plug is disconnected from the protective motor switch, before removing the obstruction. Do not put your fingers or any object through the mixer gate.

CLEANING / MAINTENANCE

Before cleaning the mixer, the plug must be removed from the socket. Open the lid and lift the mixing blades off the axle. The mixer arms are easily removed without using tools.

Firstly wash the mixer arms and the entire mixing drum using water. When cleaning has ended, place the mixer arms onto the axle and close the lid.

TRANSPORT

During transport of the SoRoTo Forced Action Mixer it is recommended that the mixer be placed on the four wheels, and the lid is closed and locked with the rubber strap.

SAFETY

When using an extension cable, please observe of the following,

- Never use a longer cable than necessary.
- Always use a cable with a minimum dimension of 1 mm².
- Never use the cable when it is rolled up. Always roll it out completely.

When mixing materials that emit unpleasant or dangerous vapours and/or dust, a dust controller is recommended.



DISTINCTIVE SOROTO MIXER ARMS

are removed without tools facilitates cleaning and replacement. Also available with rubber blades for mixes containing aggregates

OPTIONAL DUST CONTROLLER

helps avoiding dangerous dust discomfort - without losing the opportunity to keep an eye on the mixture, as you do with a closed forced action mixer

RUBBER STRAP

The machines are equipped with a rubber strap that ensure that the grid lid does not open during use or transport

SMALL LOADING WHEELS

and the use of customized lowered nuts mean you can easily load the machine onto the truck. Even the biggest machines are easy to handle

BRACKET

is mounted on every machine for holding a brick trowel

GEAR MOTOR

selected under the motto: maximum power — minimum load. A powerful motor which, on the other hand, has the lowest possible ampere consumption, so the strain on the power grid and the environment is minimized

SAFETY GRID

in front of the discharge chute, together with the safety switch, ensure that you do not risk harming yourself in the working machine

WHEELS

the mixer is easily moved from one place to another on the construction site without any use of a vehicle

BUCKET STAND

All 240V machines are equipped with a robust bucket stand for a masonry bucket

TELESCOPIC LEGS

ensure the right working height

SPARE POWER OUTLET

Models 200L and 300L are equipped with a spare power outlet for work lighting, industrial vacuum cleaner, belt conveyor or the like

OPTIONAL TURBO ARM

Can be mounted on the 300L mixer (e.g. for masonry mortar)

TECHNICAL DATA

Model 40L/30

Motor: 240V/110V - 0.75 kW - 50 Hz
 W/L/H: 60*60*85 cm
 Mixing capacity: 40 L.
 Weight: 45 kg (empty).
 LAeq < 75dB(A) with mortar.

Model 80L/30

Motor: 240V/110V - 1.1 kW - 50 Hz
 W/L/H: 60*75*106 cm
 Mixing capacity: 80 L.
 Weight: 65 kg (empty).
 LAeq < 75dB(A) with mortar.

Model 100L/30

Motor: 240V/110V - 1.1 kW - 50 Hz
 W/L/H: 68*80*106 cm
 Mixing capacity: 100 L.
 Weight: 75 kg (empty).
 LAeq < 75dB(A) with mortar.

Model 120L/30

Motor: 240V/110V - 1.1 kW - 50 Hz
 W/L/H: 72*95*118 cm
 Mixing capacity: 120 L.
 Weight: 90 kg (empty).
 LAeq < 75dB(A) with mortar.

TECHNICAL SUPPORT / WAREHOUSE

Fabriksparken 11
 DK-2600 Glostrup
 Tel. +45 3672 7800
 teknik@soroto.dk

SALES / ADMIN

Fabriksparken 13
 DK-2600 Glostrup
 Tel. +45 3672 7500
 soroto@soroto.dk

INCLUDING

Mixer arms with steel blades and cross joint



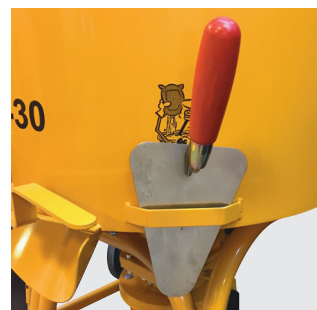
INCLUDING

Small loading wheels for easy on-/unloading



INCLUDING

Bracket for holding a brick trowel



INCLUDING

Telescopic legs for setting the right working height



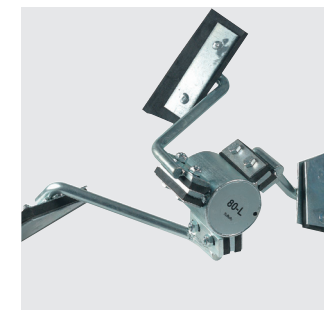
OPTIONAL

Dust controller for better OSH*



OPTIONAL

Rubber blades for mixes containing aggregates

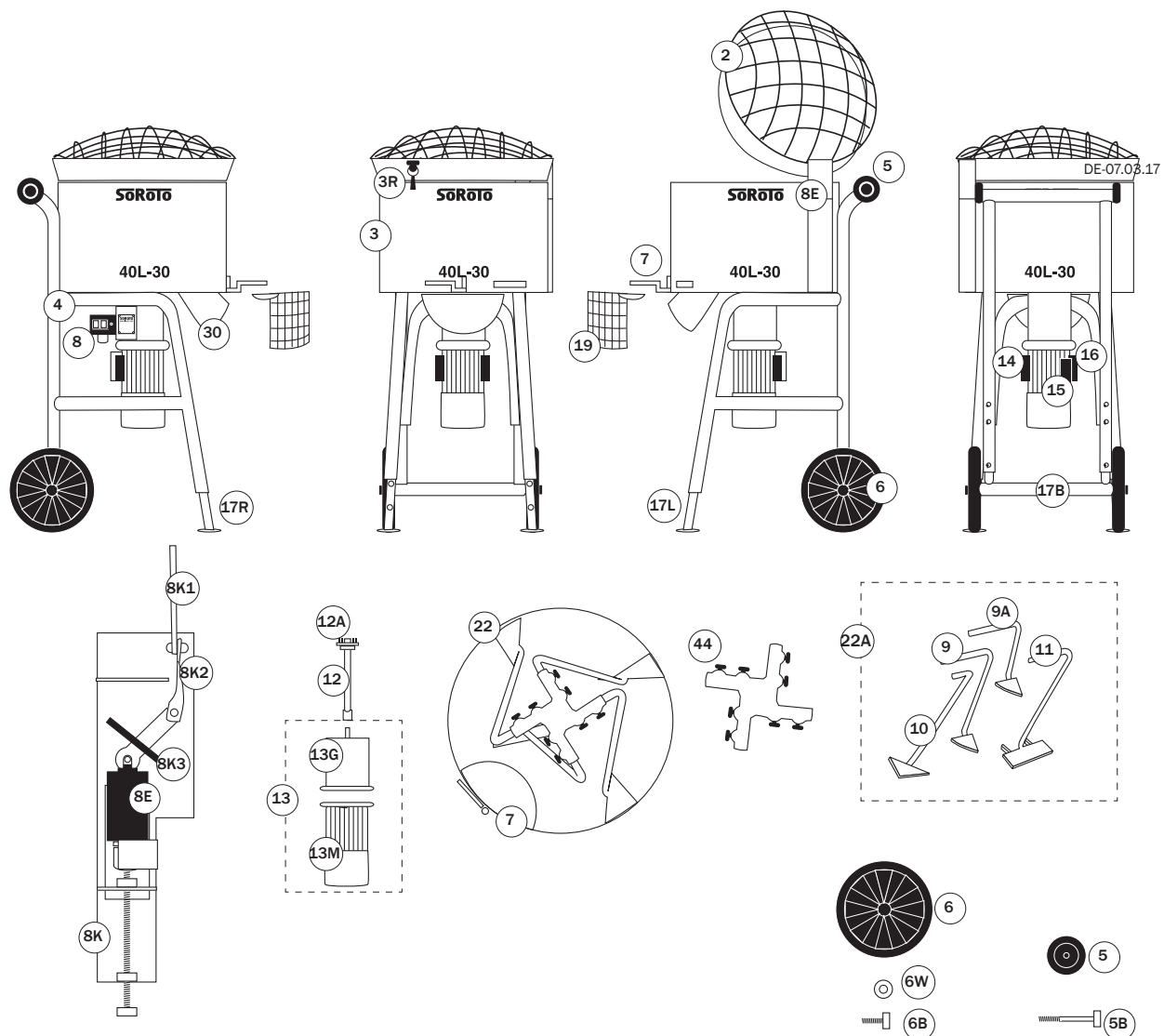


Pos.No.	Description	Spare Part No.
2	Grid lid (hinge 100 mm).....	40.002
3	Mixer drum incl. mixer gate, complete set.....	40.003
3 R	Rubber strap for grid lid	40.003R
4	Frame, complete w/wheels etc.	40.004
4 A	Frame, "Body" - excl. wheels and telescopic legs	40.004A
5	Loading wheel (1 pc.), 80 mm, excl. bolt.....	40.005
5 B	Bolt (1 pc.) for 80 mm loading wheel.....	40.005B
6	Wheel (1 pc.), 300 mm, excl. bolt	40.006
6 B	Bolt (1 pc.) for 300 mm wheel.....	40.006B
6 W	Washer (1 pc.) for 300 mm wheel.....	40.006W
7	Mixer gate incl. bolt etc.....	40.007
8	Switch 9.5 Amp. w/thermal circuit breaker.....	40.008
8 E	Safety switch - by the grid lid	40.008E
8 K	Cassette for safety switch, complete.....	40.008K
8 K1	Piece for safety switch, bended metal part	40.008K1
8 K2	Piece for safety switch, twisted metal part	40.008K2
8 K3	Piece for safety switch, rubber part	40.008K3
9	Mixer arm (1 pc.), Side (long).....	40.009
9 A	Mixer arm (1 pc.), Side (short).....	40.009A
10	Mixer arm (1 pc.), Side-base.....	40.010
11	Mixer arm (1 pc.), Rake.....	40.011
12	Drive shaft, complete	40.012
12 A	Spring pins, complete set of 12 incl. a jig.....	40.012A
13	Gear motor 0.75 kW, 1400/30 RPM., 230 V.....	40.013
13 G	- Gear only	40.013G
13 M	- Motor only	40.013M
14	Starting capacitor 125 µf.....	40.014
15	Operating capacitor 25 µf.....	40.015
16	Phase capacitor 20 µf.....	40.016
17 B	Telescopic legs, rear.....	40.017B
17 L	Telescopic leg (1 pc.), front - left side	40.017L
17 R	Telescopic leg (1 pc.), front - right side	40.017R
17 SB	Bolt and nut (1 pair) for telescopic leg (1 pc.)	40.017SB
19	Safety grid by the mixer gate	40.019
22	Mixer arms, 4 pcs., complete set	40.022
22 A	Mixer arms, 4 pcs., wo/cross joint	40.022A
30	Discharge chute (incl. nuts).....	40.030
44	Cross joint for mixer arms, steel.....	40.044

Spare Part List - 40 L, 230V

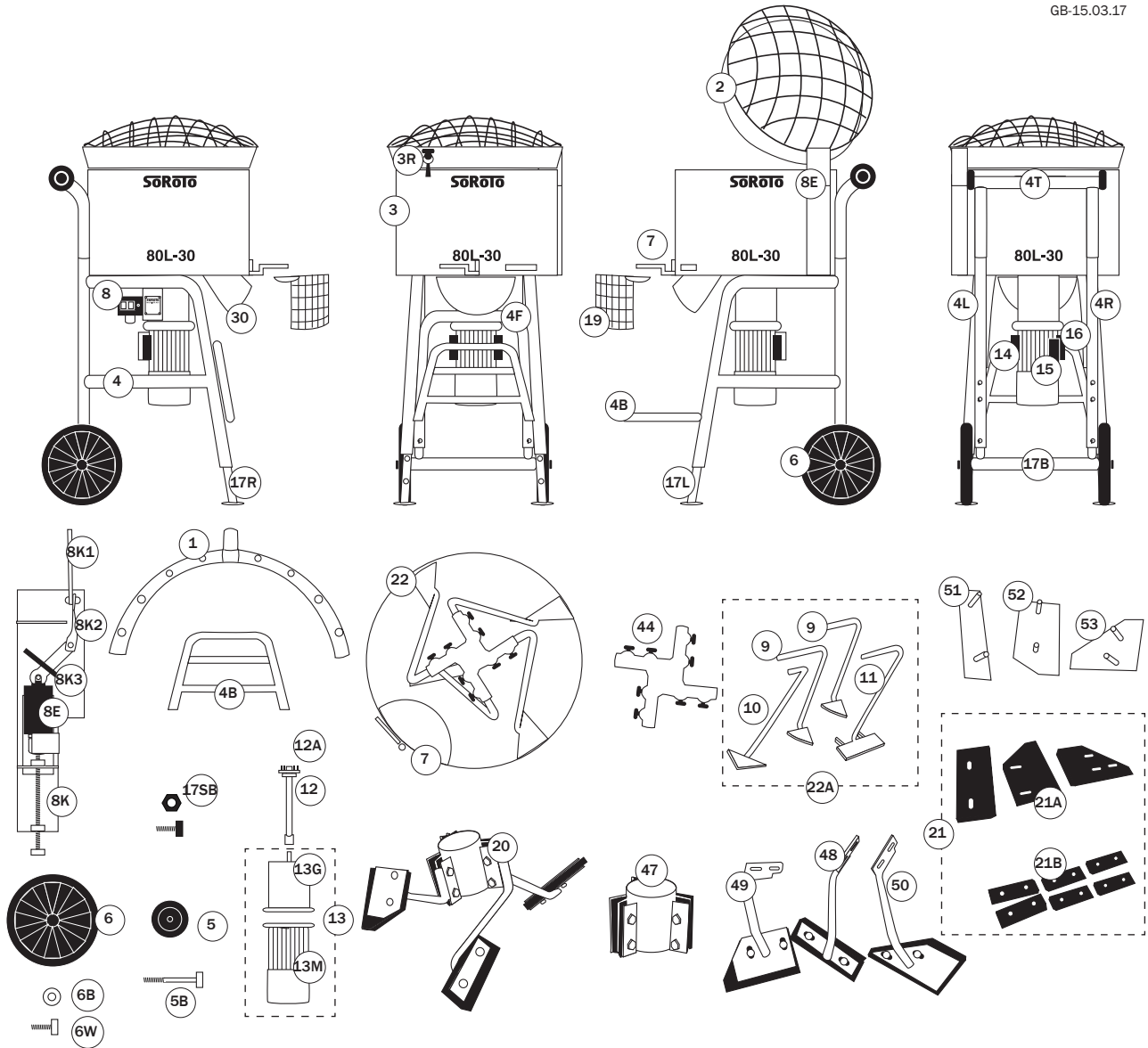


GB-15.03.17



Spare Part List - 80 L, 230V

Pos. No.	Description	Art. No.
1 *	Dust liminator	80.001DL
2	Grid lid (hinge 100 mm)	80.002
3	Mixer drum incl. mixer gate, complete set	80.003
3 R	Rubber strap - for grid lid	80.003R
4	Frame, complete w/wheels etc.	80.004
4 B	Bucket stand	80.004B
4 F	Frame, front part (U-shape)	80.004F
4 L	Frame, left side part	80.004L
4 R	Frame, right side part	80.004R
4 T	Frame, top/rear part	80.004T
5	Loading wheel (1 pc), 80 mm, excl. bolt	80.005
5 B	Bolt (1 pc.) for 80 mm loading wheel	80.005B
6	Wheel (1 pc.), 300 mm, excl. bolt	80.006
6 B	Bolt (1 pc.) for 300 mm wheel	80.006B
6 W	Washer (1 pc.) for 300 mm wheel	80.006W
7	Mixer gate incl. bolt etc.	80.007
8	Switch 9.5 Amp. w/thermal circuit breaker	80.008
8 E	Safety switch - by the grid lid	80.008E
8 K	Cassette for safety switch, complete	80.008K
8 K1	Piece for safety switch, bended metal part	80.008K1
8 K2	Piece for safety switch, twisted metal part	80.008K2
8 K3	Piece for safety switch, rubber part	80.008K3
9	Mixer arm (1 pc.), Side	80.009
10	Mixer arm (1 pc.), Side-base	80.010
11	Mixer arm (1 pc.), Rake	80.011
12	Drive shaft, complete	80.012
12 A	Spring pins, complete set of 12 pins incl. a jig	80.012A
13	Gear motor 1.1 kW, 1400/30 RPM, 230 V	80.013
13 G	- Gear only	80.013G
13 M	- Motor only	80.013M
14	Starting capacitor 125 µf	80.014
15	Operating capacitor 25 µf	80.015
16	Phase capacitor 20 µf	80.016
17 B	Telescopic legs, rear	80.017B
17 L	Telescopic leg, front - left side	80.017L
17 R	Telescopic leg, front - right side	80.017R
17 SB	Bolt and nut (1 pair) for telescopic leg (1 pc.)	80.017SB
19	Safety grid - by the mixer gate	80.019
20 *	Mixer arms w/rubber, 3 pcs., complete set	80.020
20 A	Mixer arms w/rubber, 3 pcs., wo/cross joint	80.020A
48	Mixer arm w/rubber, Rake	80.048
49	Mixer arm w/rubber, Side-base	80.049
50	Mixer arm w/rubber, Side	80.050
21	Rubber parts (replacement set, complete)	80.021
21 A	Rubber parts (replacement set, blades only)	80.021A
21 B	Rubber parts (replacement set, cross joint only)	80.021B
22	Mixer arms, set of 4 pcs., complete	80.022
22 A	Mixer arms, set of 4 pcs., wo/cross joint	80.022A
30	Discharge chute (incl. nuts)	80.030
44	Cross joint for mixer arms, steel	80.044
47	Cross joint for mixer arms, rubber	80.047
51	Bracket for mixer blade, rubber, Rake	80.051
52	Bracket for mixer blade, rubber, Side-base	80.052
53	Bracket for mixer blade, rubber, Side	80.053



Spare Part List for the 80 L mixers, 110V, is available online at www.soroto.dk/en

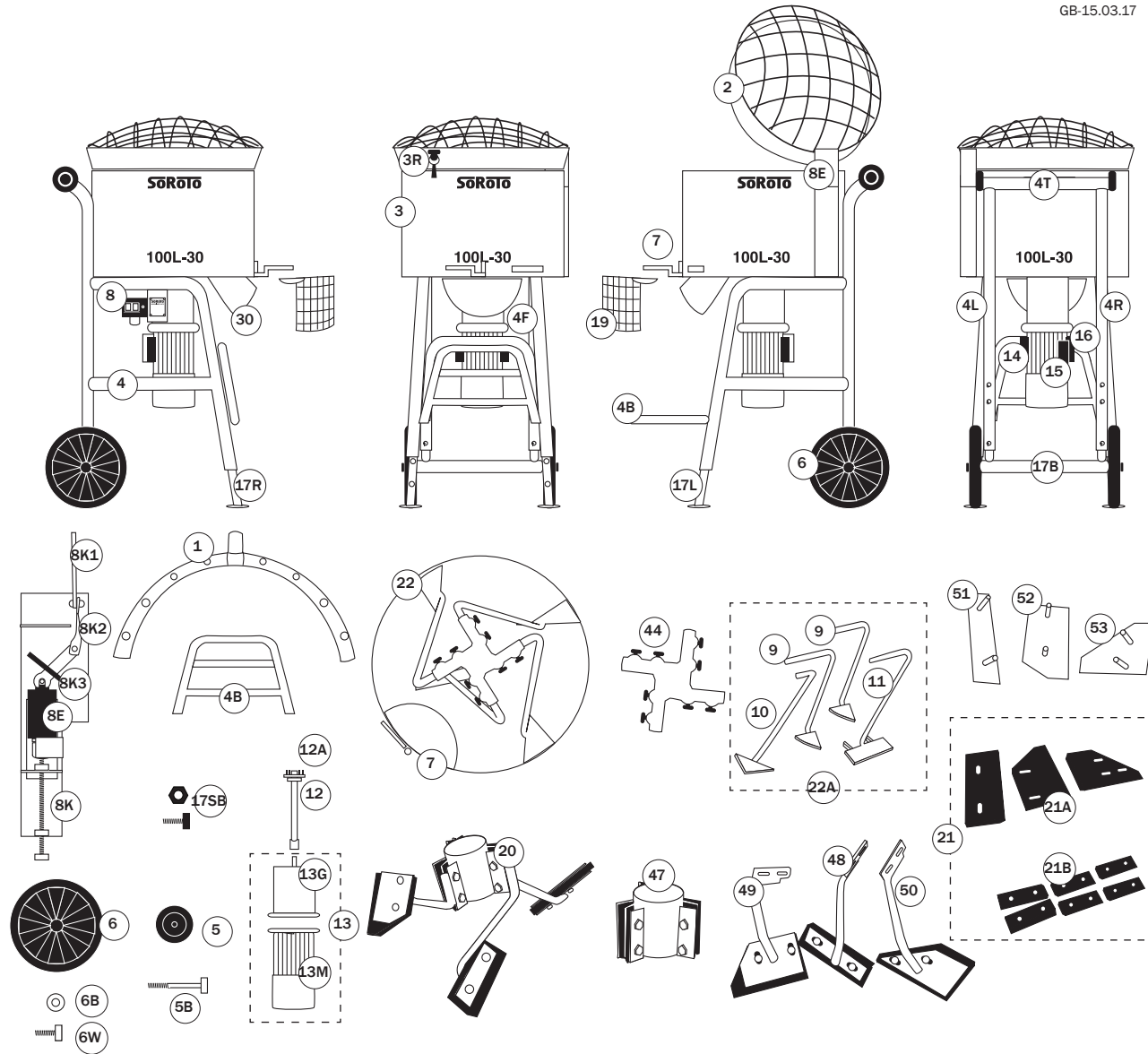
* OPTIONAL / ADDITIONAL EQUIPMENT

Pos. No.	Description	Art. No.
1 *	Dust liminator	100.001DL
2	Grid lid (hinge 100 mm)	100.002
3	Mixer drum incl. mixer gate, complete set	100.003
3 R	Rubber strap - for grid lid	100.003R
4	Frame, complete w/wheels etc.	100.004
4 B	Bucket stand	100.004B
4 F	Frame, front part (U-shape)	100.004F
4 L	Frame, left side part	100.004L
4 R	Frame, right side part	100.004R
4 T	Frame, top/rear part	100.004T
5	Loading wheel (1 pc.), 80 mm, excl. bolt	100.005
5 B	Bolt (1 pc.) for 80 mm loading wheel	100.005B
6	Wheel (1 pc.), 300 mm, excl. bolt	100.006
6 B	Bolt (1 pc.) for 300 mm wheel	100.006B
6 W	Washer (1 pc.) for 300 mm wheel	100.006W
7	Mixer gate incl. bolt etc.	100.007
8	Switch 16 Amp. w/thermal circuit breaker	100.008
8 E	Safety switch - by the grid lid	100.008E
8 K	Cassette for safety switch, complete	100.008K
8 K1	Piece for safety switch, bended metal part	100.008K1
8 K2	Piece for safety switch, twisted metal part	100.008K2
8 K3	Piece for safety switch, rubber part	100.008K3
9	Mixer arm (1 pc.), Side	100.009
10	Mixer arm (1 pc.), Side-base	100.010
11	Mixer arm (1 pc.), Rake	100.011
12	Drive shaft, complete	100.012
12 A	Spring pins, complete set of 12 pins incl. a jig	100.012A
13	Gear motor 1.1 kW, 1400/30 RPM, 230 V	100.013
13 G	- Gear only	100.013G
13 M	- Motor only	100.013M
14	Starting capacitor 125 µf	100.014
15	Operating capacitor 25 µf	100.015
16	Phase capacitor 20 µf	100.016
17 B	Telescopic legs, rear	100.017B
17 L	Telescopic leg, front - left side	100.017L
17 R	Telescopic leg, front - right side	100.017R
17 SB	Bolt and nut (1 pair) for telescopic leg (1 pc.)	100.017SB
19	Safety grid - by the mixer gate	100.019
20 *	Mixer arms w/rubber, 3 pcs., complete set	100.020
20 A	Mixer arms w/rubber, 3 pcs., wo/cross joint	100.020A
48	Mixer arm w/rubber, Rake	100.048
49	Mixer arm w/rubber, Side-base	100.049
50	Mixer arm w/rubber, Side	100.050
21	Rubber parts (replacement set, complete)	100.021
21 A	Rubber parts (replacement set, blades only)	100.021A
21 B	Rubber parts (replacement set, cross joint only)	100.021B
22	Mixer arms, set of 4 pcs., complete	100.022
22 A	Mixer arms, set of 4 pcs., wo/cross joint	100.022A
30	Discharge chute (incl. nuts)	100.030
44	Cross joint for mixer arms, steel	100.044
47	Cross joint for mixer arms, rubber	100.047
51	Bracket for mixer blade, rubber, Rake	100.051
52	Bracket for mixer blade, rubber, Side-base	100.052
53	Bracket for mixer blade, rubber, Side	100.053

Spare Part List - 100 L, 230V



GB-15.03.17



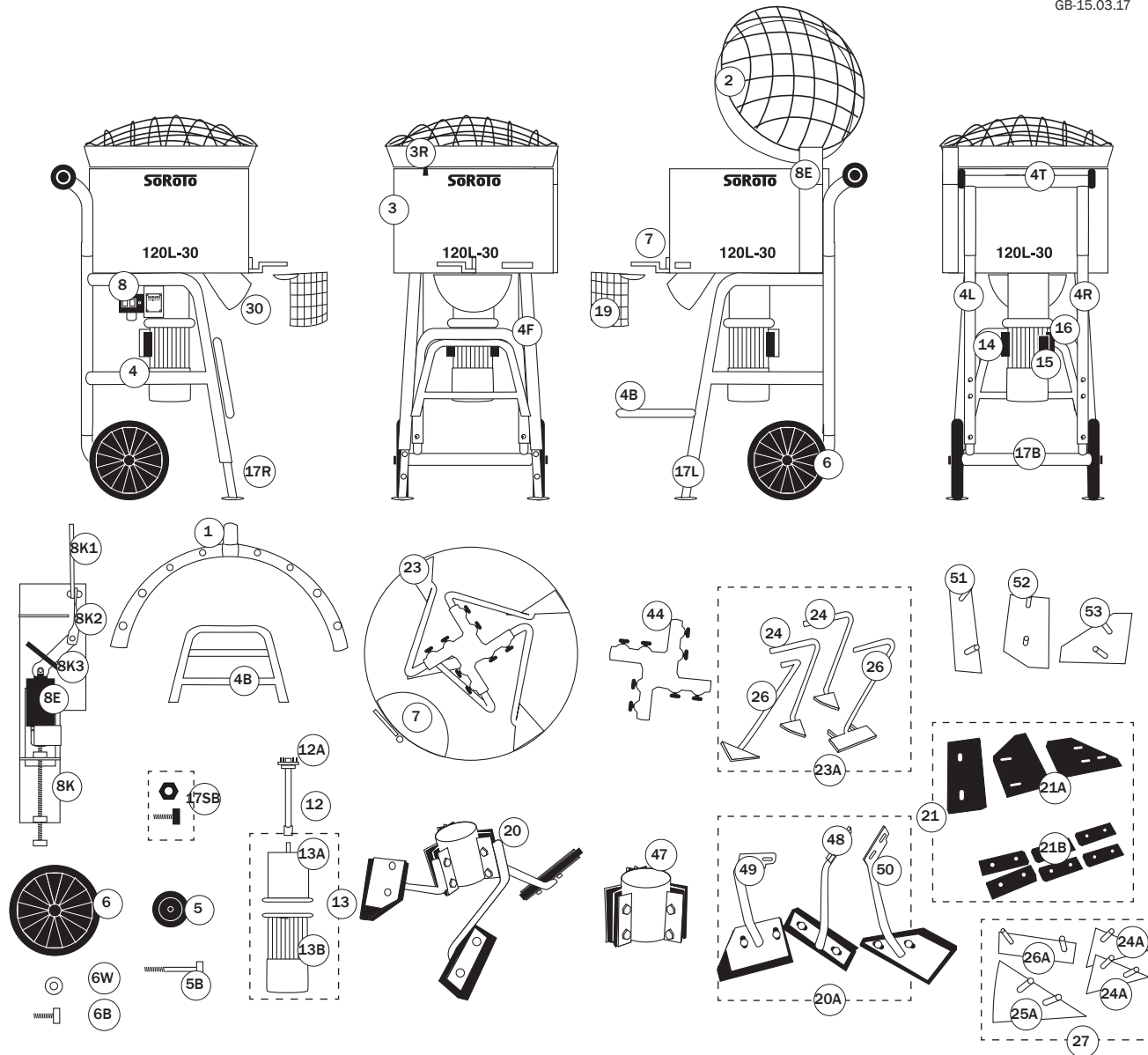
Spare Part List for the 100 L mixers, 110V, is available online at www.soroto.dk/en

Pos. No.	Description	Art. No.
1	Dust eliminator.....	120.001DL
2	Grid lid (hinge 100 mm).....	120.002
3	Mixer drum incl. mixer gate, complete set.....	120.003
3 R	Rubber strap - for grid lid.....	120.003R
4	Frame, complete w/wheels etc.....	120.004
4 B	Bucket stand.....	120.004B
4 F	Frame, front part (U-shape).....	120.004F
4 L	Frame, left side part.....	120.004L
4 R	Frame, right side part.....	120.004R
4 T	Frame, top/rear part.....	120.004T
5	Loading wheel (1 pc.), 80 mm, excl. bolt.....	120.005
5 B	Bolt (1 pc.) for 80 mm loading wheel.....	120.005A
6	Wheel (1 pc.), 300 mm, excl. bolt.....	120.006
6 B	Bolt (1 pc.) for 300 mm wheel.....	120.006B
6 W	Washer (1 pc.) for 300 mm wheel.....	120.006W
7	Mixer gate incl. bolt etc.....	120.007
8	Switch 9,5 Amp. w/thermal circuit breaker and O-discharger....	120.008
8 E	Safety switch - by the grid lid.....	120.008E
8 K	Cassette for safety switch, complete.....	120.008K
8 K1	Cassette for safety switch, bended metal part.....	120.008K1
8 K2	Cassette for safety switch, twisted metal part.....	120.008K2
8 K3	Cassette for safety switch, rubber part.....	120.008K3
12	Drive shaft.....	120.012
12 A	Spring pins, complete set of 12 pins incl. a jig.....	120.012A
13	Gearmotor 1.1 kW, 1400/30 RPM, 230 V.....	120.013
13 G	- Gear only.....	120.013G
13 M	- Motor only.....	120.013M
14	Starting capacitor 125 µf.....	120.014
15	Operating capacitor 25 µf.....	120.015
16	Phase capacitor 20 µf.....	120.016
17 B	Telescopic leg (1 pc.), rear.....	120.017B
17 L	Telescopic leg (1 pc.), front - left side.....	120.017L
17 R	Telescopic leg (1 pc.), front - right side.....	120.017R
17 SB	Bolt and nut (1 pair) for telescopic leg (1 pc.).....	120.017SB
19	Safety grid - by the mixer gate.....	120.019
20 *	Mixer arms w/rubber, 3 pcs. complete set.....	120.020
20 A	Mixer arms w/rubber, 3 pcs., wo/cross joint.....	120.020A
21	Rubber parts (replacement set, complete).....	120.021
21 A	Rubber parts (replacement set, blades only).....	120.021A
21 B	Rubber parts (replacement set, cross joint only).....	120.021B
23	Mixer arms, set of 4 pcs., complete set.....	120.023
23 A	Mixer arms, set of 4 pcs., wo/cross joint.....	120.023A
24	Mixer arm (1 pc.), Side.....	120.024
25	Mixer arm (1 pc.), Side-base.....	120.025
26	Mixer arm (1 pc.), Rake.....	120.026
24 A	Mixer blade, separate, Side.....	120.024A
25 A	Mixer blade, separate, Side-base.....	120.025A
26 A	Mixer blade, separate, Rake.....	120.026A
27	Mixer blades, steel, complete set (4 pcs., incl. nuts).....	120.027
30	Discharge chute, incl. bolts.....	120.030
44	Cross joint for mixer arms, steel, incl. bolts.....	120.044
47	Cross joint for mixer arms, rubber, incl. brackets and bolts.....	120.047
51	Bracket for mixer blade, rubber, Rake.....	120.051
52	Bracket for mixer blade, rubber, Side-base.....	120.052
53	Bracket for mixer blade, rubber, Side.....	120.053

Spare Part List - 120 L, 230V



GB-15.03.17



Spare Part List for the 120 L mixers, 110V, is available online at www.soroto.dk/en

*OPTIONAL / ADDITIONAL EQUIPMENT

MANUAL APPLIES TO

SoRoTo 200L, 300L

APPLICATION

The SoRoTo Forced Action Mixers are ideal for mixing all kinds of materials used in the building industry, as well as mixing tasks where high demand are required.

When mixing materials containing aggregates, we recommend using the SoRoTo mixer arms with rubber blades.

BEFORE USE

Before starting the mixer, the telescopic legs must be positioned for the right height for draining into a bucket or wheelbarrow.


The easiest way for adjusting the legs, is to lay the mixer down, so it rests on all four wheels. The legs are released and locked with the fitted lock splits/bolts.

BEFORE CONNECTING TO POWER SUPPLY

Before the power is connected, the mixer arms must be set in place, and the lid must be closed. The safety grid in front of the mixer gate must be attached at all times.

For own safety always follow the instruction listed above before use.

OPERATING THE SoRoTo FORCED ACTION MIXER

 The motor protection unit in this mixer is equipped with a built in reverse locking system. This prevents the motor from running in reverse. If the extension lead does not have a neutral (i.e. 4 core cable) the machine will not start.

So, before you start mixing please do as follows,

- 1) Push the green START button
- 2) Notice if the mixer arms run clockwise
- 3) In the event that the mixer arms run counterclockwise, please adjust to clockwise direction by following these instructions:

- It is essential the neutral wire is part of the cable (5 core) as well as the electric socket supplying power to the motor (i.e. wall wall socket, switchboard)
- The phases of the reverse locking system may be easily adjusted by inserting a flatheaded screwdriver into the slot on the red plug and turning 180 degrees



NOTE

The mixer remains non-operational if the lid is open.

Close the lid and lock it into place using the rubber strap. Start the mixer by pressing the green START button on the protective motor switch. Pour the required material into the drum and add liquid.

The protective motor switch has a zero voltage releaser. In case of power failure, the mixer must be restarted. For safety reasons, the mixer will not start if the lid is open.



NOTE

Never put your hand or any object into the machine when the power is connected.

When the material has reached the desired consistency and the mixing motion is finished, the mixer drum is emptied by opening the mixer gate. The drum should be emptied right after mixing. Please observe that the material may set in the mixer drum if left too long.

NOTE

The safety grid should be in front of the output gate at all times. If the machine is jammed, e.g. by larger stones, ensure that the plug is disconnected from the protective motor switch, before removing the obstruction. Do not put your fingers or any object up through the mixer gate.

CLEANING / MAINTENANCE

Before cleaning the mixer, the plug must be removed from the socket. Open the lid and lift the mixer arms off the axle. The mixer arms are easily removed without using tools. Firstly wash the mixer arms and the entire mixer drum using water.

NOTE

While the mixer arms are disconnected from the axle tower, make sure that neither water nor dust etc. enter the axle tower.

When cleaning has ended, place the mixer arms onto the axle and close the lid.

TRANSPORT

When transporting the SoRoTo 200L Forced Action Mixer it is recommended that the mixer be placed on the four wheels, the lid closed and locked - using the rubber strap.

When transporting the SoRoTo 300L Forced Action Mixer with the traction bar, the traction bar is locked with 2 pin bolts. The traction bar can now be attached to a vehicle. The 300 L mixer may only be transported locally and at very low speed. During transport, the lid must be closed and locked using the rubber strap. When transporting the SoRoTo 300 L on a truck, the mixer may be lifted onto the truck with the help of e.g. a pallet truck. Please observe that the wheels must be blocked during transport.

OPTIONAL - 300 L

For towing the mixer after a vehicle



OPTIONAL - 300 L

Turbo arm for masonry mortar



SAFETY

When using an extension cable, please observe the following,

- Never use a longer cable than necessary.
- Always use a cable with a minimum dimension of 1 mm².
- Never use the cable when it is rolled up. Always roll it out completely.

When mixing materials that emit unpleasant or dangerous vapours and/or dust, a dust controller is recommended.

TECHNICAL DATA

Model 200L/30

Motor: 400V - 2.2 kW - 50 Hz
W/L/H: 60*60*85 cm
Mixing capacity: 200 litres
Weight: 175 kg (empty).
LAeq<75dB(A) with mortar.

Model 300L/30

Motor: 400V - 3.0 kW - 50 Hz
W/L/H: 60*75*106 cm
Mixing capacity: 270 litres
Weight: 281 kg (empty).
LAeq<75dB(A) with mortar.

TECHNICAL SUPPORT / WAREHOUSE

Fabriksparken 11
DK-2600 Glostrup
Tel. +45 3672 7800
teknik@soroto.dk

SALES / ADMIN

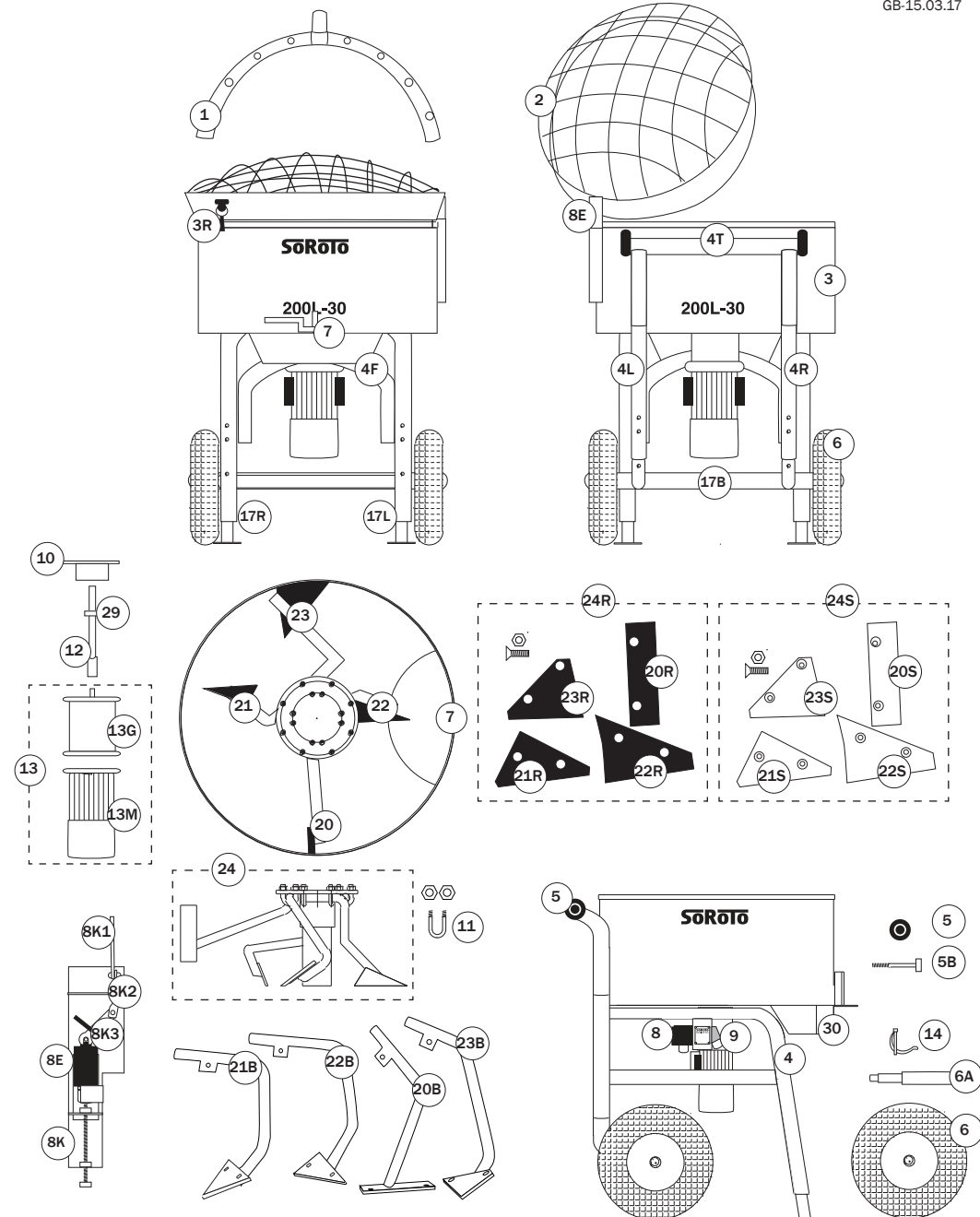
Fabriksparken 13
DK-2600 Glostrup
Tel. +45 3672 7500
soroto@soroto.dk

Pos. No.	Description	Art. No.
1 *	Dust liminator	200.001DL
2	Grid lid (hinge 100 mm)	200.002
3	Mixer drum incl. mixer gate, complete set.....	200.003
3 R	Rubber strap - for grid lid	200.003R
4	Frame, complete w/wheels etc.	200.004
4 F	Frame, front part (U-shape)	200.004F
4 L	Frame, left side part.....	200.004L
4 R	Frame, right side part.....	200.004R
4 T	Frame, top/rear part	200.004T
5	Loading wheel (1 pc.), 80 mm, excl. bolt.....	200.005
5 B	Bolt (1 pc.) for 80 mm loading wheel.....	200.005B
6	Wheel (1 pc.), 400 mm, excl. bolt	200.006
6 A	Axle (1 pc.) for 400 mm wheel.....	200.006A
7	Mixer gate incl. bolt etc	200.007
8	Switch 9.5 Amp. w/therm. circuit breaker, phase adjust. system..	200.008
8 E	Safety switch - by the grid lid	200.008E
8 K	Cassette for safety switch, complete.....	200.008K
8 K1	Piece for safety switch, bended metal part	200.008K1
8 K2	Piece for safety switch, twisted metal part	200.008K2
8 K3	Piece for safety switch, rubber part	200.008K3
9	Outlet plug 1 x 230V, 16 amp.....	200.009
10	Top disc, separate (wo/U-bolts).....	200.010
11	U-bolt (1 pc.) for securing the top disc (8 pcs. in total), incl. nut ...	200.011
12	Drive shaft, complete	200.012
13	Gear motor 2.2 kW, 1400/30 RPM, 400 V	200.013
13 G	- Gear only.....	200.013G
13 M	- Motor only	200.013M
14	Strips (1 pc.) for axle and telescopic legs, dia. ø55mm.....	200.014
17 B	Telescopic leg (1 pc.), rear	200.017B
17 L	Telescopic leg, front - left side	200.017L
17 R	Telescopic leg, front - right side	200.017R </td
20	Mixer arm w/rubber blade, Side.....	200.020
21	Mixer arm w/rubber blade, Mid-base.....	200.021
22	Mixer arm w/rubber blade Tower-base	200.022
23	Mixer arm w/rubber blade, Side-base	200.023
24	Mixer arms w/rubber blades, complete set <i>incl.</i> top disc.....	200.024
24 A	Mixer arms w/rubber blades, complete set <i>excl.</i> top disc.....	200.024A
20 B	Mixer arm wo/rubber blade, Side.....	200.020B
21 B	Mixer arm wo/rubber blade, Mid-base	200.021B
22 B	Mixer arm wo/rubber blade, Tower-base	200.022B
23 B	Mixer arm wo/rubber blade, Side-base	200.023B
24 B	Mixer arms wo/rubber blade, complete set <i>excl.</i> top disc.....	200.024B
20 R	Blade, rubber part, Side.....	200.020R
21 R	Blade, rubber part, Mid-base.....	200.021R
22 R	Blade, rubber part, Tower-base	200.022R
23 R	Blade, rubber part, Side-base.....	200.023R
24 R	Blade, rubber parts, complete replacement set	200.024R
20 S*	Blade, Hardox steel part, Side.....	200.020S
21 S*	Blade, Hardox steel part, Mid-base.....	200.021S
22 S*	Blade, Hardox steel part, Tower-base.....	200.022S
23 S*	Blade, Hardox steel part, Side-base.....	200.023S
24 S*	Blade, Hardox steel parts, complete replacement set.....	200.024S
29	Bearing for drive shaft	200.029
30	Discharge chute, incl. nuts	200.030

Spare Part List - 200 L, 400V

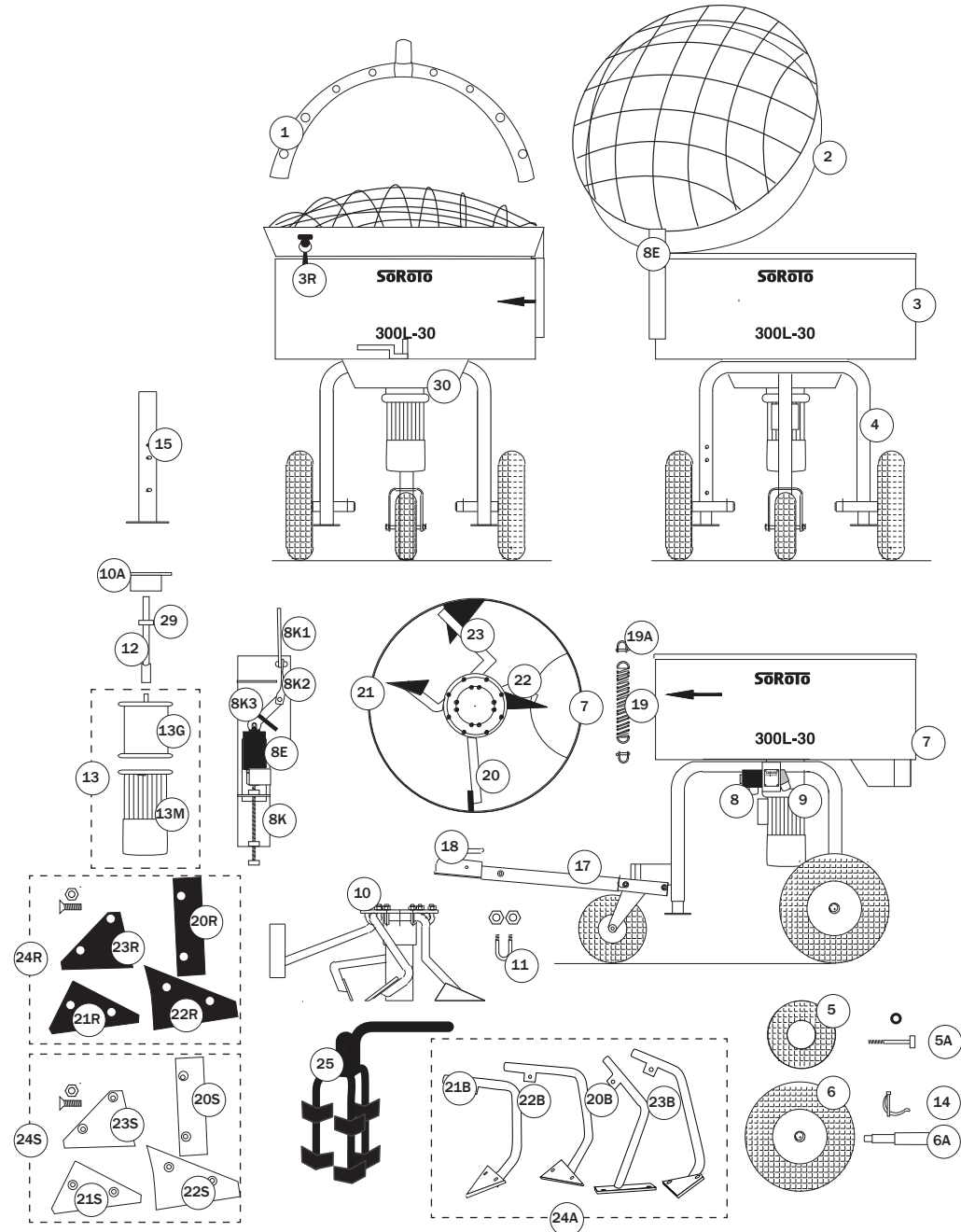


GB-15.03.17



Spare Part List - 300 L, 400V

Pos.No	Description	Art. No.
1 *	Dust liminator.....	300.001DL
2	Grid lid (hinge 100 mm).....	300.002
3	Mixer drum incl. mixer gate, complete set	300.003
3 R	Rubber strap - for grid lid.....	300.003R
4	Frame, complete w/wheels etc.	300.004
5	Wheel (1 pc.), 250 mm, excl. bolt.....	300.005
5 A	Bolt, 10x120 mm, for 250 mm wheel, incl. nut.....	300.005A
6	Wheel (1 pc.), 400 mm, excl. bolt.....	300.006
6 A	Axle (1 pc.) for 400 mm wheel.....	300.006A
7	Mixer gate incl. bolt etc.....	300.007
8	Switch 9.5 Amp. w/therm. circuit breaker, phase adj. system	300.008
8 E	Safety switch - by the grid lid.....	300.008E
8 K	Cassette for safety switch, complete	300.008K
8 K1	Piece for safety switch, bended metal part.....	300.008K1
8 K2	Piece for safety switch, twisted metal part.....	300.008K2
8 K3	Piece for safety switch, rubber part	300.008K3
9	Outlet plug 1 x 230V 16 Amp.	300.009
10	Top disc, separate (w/U-bolts).....	300.010
10 A	Top disc, separate (wo/U-bolts and nuts).....	300.010A
11	U-bolt (1 pc.) for securing top disc (8 pcs. needed in total)	300.011
12	Drive shaft, complete.....	300.012
13	Gear motor 3.0 kW, 1400/30 RPM, 400V	300.013
13 G	- Gear only.....	300.013G
13 M	- Motor only.....	300.013M
14	Strips (1 pc.) for the axle and telescopic legs, dia. ø55mm.....	300.014
15	Telescopic leg (1 pc.)	300.015
17 *	Pole excl. globe coupling	300.017
17 A	Stud bolt for pole.....	300.017A
18 *	Globe coupling incl. bolt and nut	300.018
19	Spring for grid lid	300.019
19 A	D-shackle bolt for spring.....	300.019A
20	Mixer arm w/rubber blade, Side	300.020
21	Mixer arm w/rubber blade, Mid-base	300.021
22	Mixer arm w/rubber blade, Tower-base.....	300.022
23	Mixer arm w/rubber blade, Side-base.....	300.023
24	Mixer arms w/rubber blade, complete set <i>incl.</i> top disc	300.024
24 A	Mixer arms w/rubber blade, complete set <i>excl.</i> top disc	300.024A
20 B	Mixer arm wo/rubber blade, Side	300.020B
21 B	Mixer arm wo/rubber blade Mid-base	300.021B
22 B	Mixer arm wo/rubber blade, Tower-base.....	300.022B
23 B	Mixer arm wo/rubber blade, Side-base.....	300.023B
20 R	Blade, rubber part, Side	300.020R
21 R	Blade, rubber part, Mid-base	300.021R
22 R	Blade, rubber part, Tower-base	300.022R
23 R	Blade, rubber part, Side-base	300.023R
24 R	Blades, rubber part, complete replacement set	300.024R
20 S*	Blade, Hardox steel, Side.....	300.020S
21 S*	Blade, Hardox steel, Mid-base	300.021S
22 S*	Blade, Hardox steel, Tower-base	300.022S
23 S*	Blade, Hardox steel, Side-base	300.023S
24 S*	Blades, Hardox steel, complete replacement set	300.024S
25 *	TURBO mixer arm (for mixing builder's mortar) **	300.025
29	Bearing for drive shaft	300.029
30	Discharge chute	300.030



* OPTIONAL / ADDITIONAL PARTS
** Pos.No. 21 is replaced by pos.no. 25

EU Declaration of Conformity

Annex II.A of the Machinery Directive

Manufacturer: SoRoTo

Address: Fabriksparken 11-13, 2600 Glostrup, DENMARK

Product: Forced Action Mixers

Model: 40L-30, 65 light, 80L-30, 100L-30, 120L-30,
200L-30 and 300L-30

Manufactured: From 2015 and onwards

We hereby declare that the **SoRoTo Forced Action Mixers** are manufactured in conformity with the stipulation contained in COUNCIL DIRECTIVE No. 2006/42/EC on the approximation of the laws of member states on machine, including subsequent modifications, with special regard to Annex I of the directive on important safety and health requirements in connection with the design and manufacture of machines.

Furthermore, we declare that the **SoRoTo Forced Action Mixers** are manufactured in conformity with the following harmonised standard,

EN 12151:2007

15.03.2017
Glostrup, DENMARK



Hans Terney Rasmussen
CEO

SoRoTo[®]
HARD WORKING SINCE 1986

FABRIKSPARKEN 11-13 DK-2600 GLOSTRUP