

Since the usage and finishing of the product is not under our control, we accept no liability for the success of our products as per the accompanying product data sheets and in accordance with our general terms and conditions of sale. The properties listed here represent no guarantee with respect to the eventual use of our products. We reserve the right to make changes due to technical advances. Any other technical information given in the course of a consultation must be confirmed in writing. Colours shown here are restricted by the printing techniques and may differ from those exhibited by the products themselves. We also reserve the right to make alterations to the product technology or design. Only the current version of this data sheet is valid. Such versions are accessible by anyone via the internet. The issue of the latest data sheet invalidates all those that have been published beforehand.

# DURAPLUS

1/2

## Decorative and dividing profile

- Installation Instructions -

**DURAL**



### INSTALLATION:

Select the DURAPLUS profile to match the thickness of the tiles themselves plus the thickness of the adhesive bed. Bed the full surface of the tri-axis perforated base of the profile in the thin-bed mortar (DIN EN 12004) and straighten it up. Lay the tiles, positioning them such that the edges are flush with the top edge of the profile. A joint of about 2–3 mm thickness should be left between tiles and profile. If any thin-bed mortar squeezes out of the joint, the surplus should be removed so that the remaining mortar is also flush with the tiles, ensuring that the depth of the joint in cross-section remains uniform.

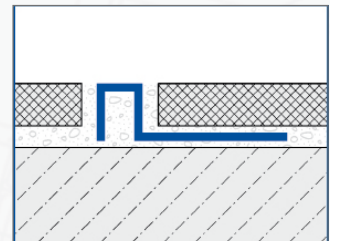
When installing profiles, it is essential to take care that the profile surface does not become soiled with adhesive, since this may cause severe and irreversible staining. Any adhesive residues must be washed off the profile immediately using clear, clean water and then the surface must also be wiped clean with a dry linen cloth.

To make inside or outside corners, DURAPLUS corner pieces (DPA 1262-Y) should be used. These are fitted flush and without bending directly alongside the adjoining profile with no intervening joint. In addition, it is worth observing that if the profile has been cut to length, the cut surface should not be joined to the corner pieces for reasons of appearance.

Cutting profiles to length manually should be done using a hacksaw with a fine saw blade to ensure a smooth, neat cut. Alternatively, suitable stationary cutting machines can be used.

Grouting of the surface should be done using grout with no abrasive content that might scratch the surface of the profile. If using conventional grouting methods, applying wet grout with a trowel, care should be taken to ensure that the visible surface of the profile does not get soiled with grout, since this may cause irreversible staining or even corrosion of the metal. The grouting should be done in such a way that the visible surface of the profile does not come into contact with any alkaline grout.

When the surface is being cleaned, no cement stain removers or similar chemically active cleaning agents are to be used.



DURAL GmbH  
Südring 11  
D-56412 Ruppach-Goldhausen  
Tel. +49 (0) 2602/9261-0  
Fax +49 (0) 2602/9261-50  
info@dural.com

## Decorative and dividing profile

### - Installation Instructions -

As a rule, these profiles are used for wall surfaces in dry indoor areas. The profile manufacturer makes no claim as to the appropriate, long-term use of profiles for floors, since many local factors may make it impossible to use them there.

#### **CLEANING AND MAINTENANCE:**

When cleaning the profiles for maintenance purposes, only neutral cleaning agents with a pH of between 6.5 and 7.5 (approx.) are to be used and such agents may contain no abrasive additives. After cleaning with water, profiles should be dried off using a soft, dry linen cloth.

To keep the profiles looking nice for a long time, we recommend regular cleaning which does not put the profiles under stress from abrasives or mechanical loads.

Some suitable detergents may also be used for cleaning the profiles, whereby an appropriate amount should be added to the cleaning water.

DURAL GmbH  
Südring 11  
D-56412 Ruppach-Goldhausen  
Tel. +49 (0) 2602/9261-0  
Fax +49 (0) 2602/9261-50  
info@dural.com